



## Pressure Gauges with Electric Contact (Sanitary)

### FEATURES

A measuring instrument directly contacts foods, medicines, cosmetics, etc. should be provided with sanitary consideration.

This is a pressure gauge with electric contacts which has been designed to be appropriate for these types of instruments and can be extensively applied to foods, medicines, cosmetics and additionally to biotechnology, etc.

### FEATURES

- This pressure gauge can be applied by contact point to warning application to turn on and off a buzzer and a lamp.
- The case is chromium plated, being rich in cleanliness.
- The liquid contacting portion is made of stainless steel and excellent corrosion resistance is demonstrated.
- A newly-designed diaphragm minimize an error due to temperature.

### SPECIFICATION 1

#### Fluid:

Gas or liquid

#### Operating condition:

Under the normal condition, where there is no inflammable gas or liquid which cause the ignition or explosion.

#### Mounting:

Stem... Type A, Type A with radiation fin

#### Size:

100 DIA.

#### Connection:

Ferrule type, Nut type, Male type

#### Size:

1S, 1 1/2S, 2S, 2 1/2S, 3S

#### Wetted parts material:

Diaphragm 316Lst.st.  
Socket 316st.st. or 316Lst.st.

#### Pressure range:

0 ~ 0.2 → 0 ~ 5MPa (0 ~ 2 → 0 ~ 50kgf/cm<sup>2</sup>)  
-0.1 ~ 0.1 → -0.1 ~ 2MPa  
(-1 ~ 1 → -1 ~ 20kgf/cm<sup>2</sup>)

#### Operating temperature:

Ambient -5 ~ 40°C (But fluid should not be frozen)  
Connection -5 ~ 100°C  
(With radiation fin -5 ~ 135°C)

#### Allowable temperature range:

Ambient -5 ~ 60°C (But fluid should not be frozen)  
Connection -5 ~ 150°C

#### Accuracy:

±1.5%F.S.

#### Temperature coefficient:

Ambient 0.2%F.S./deg or less  
Wetted parts 0.1%F.S./deg or less

#### Dead band:

2%F.S./ or less (AC) 5%F.S./ or less (DC)

#### Switch:

Contact switch (Open type low contact)

#### Number of contact:

One contact or two contact

#### Outlet for electric wire:

Gland JIS 20b

#### Filled liquid:

Propylene glycol (But silicon oil for compound range.)

#### Case material:

YBc3 Chrome plating

#### Construction:

Water-proofing type

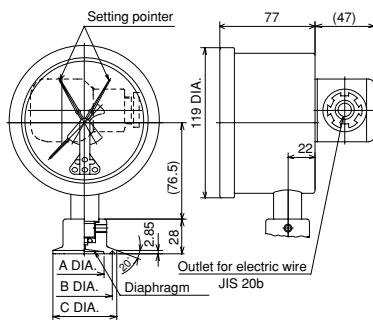
## SPECIFICATION 2

Electric characteristics:

Rating		Withstand voltage	Insulation resistance
	Load resistance		
100V AC	0.5 A	1000V AC Between terminal and case 1 minute	500V DC 100MΩ over Between terminal and case
200V AC	0.25 A		
100V DC	0.05 A		
200V DC	0.025 A		

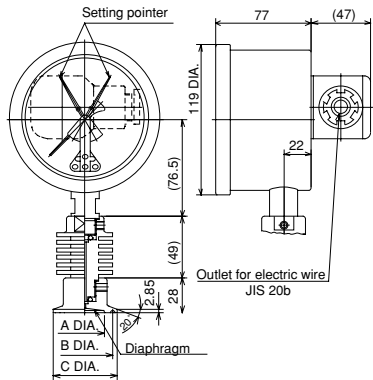
## DIMENSIONS

Type A

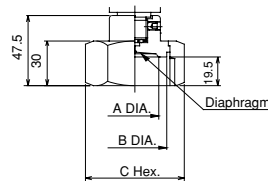


Ferrule type

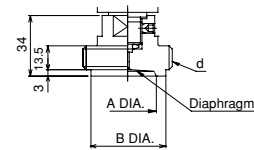
Type A With radiation fin



Ferrule type



Nut type



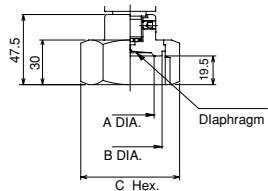
Male type

Ferrule type

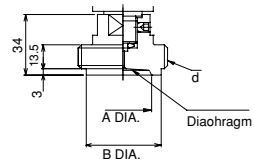
	A	B	C
1S	32	43.5	50.5
1 1/2S	32	43.5	50.5
2S	47	56.5	64

Nut type, Male type

	A	B	C (Nut type only)
1 1/2S	32	42.7	56 64.7 Hex.
2S	47	56.2	71 82 Hex.



Nut type



Male type

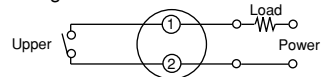
## TYPE OF CONTACT POINT AND WIRING SYSTEM

- Upper limit type with one contact (H)  
When the pressure is upper than set value, contact points work to turn a circuiton.
- Lower limit type with one contact (L)  
When the pressure is lower than set value, contact points work to turn a circuiton.
- Upper and lower limit type with two contact (HL)  
Two contact type which is combined upper and lower limit and they have a common terminal.

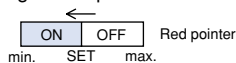
A figure of operation



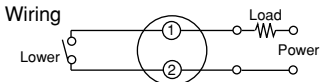
Wiring



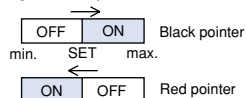
A figure of operation



Wiring



A figure of operation



Wiring

