



SL81

Anti-corrosion Pressure Gauges

OUTLINE

In this pressure gauge, fluorine resin is applied to the liquid contacting portion, demonstrating excellent chemical resistant and non-adhesive properties. So, this pressure gauge is appropriate for measuring not simply general liquid but strong corrosive liquid. The case is made of vinyl chloride and of hermetic type, therefore, this gauge can be applied to severe conditions like corrosive atmosphere, etc.

FEATURES

- As the liquid contacting portion is made of vinyl chloride and excellent corrosion resistance is demonstrated, this pressure gauge can be applied to almost any measuring of corrosive liquid like chemicals. Additionally, because of the application of a hermetic case made of vinyl chloride, this pressure gauge can be applied even in corrosive atmosphere.
- The particle quantity of not simply in the element interior but in this gauge itself is suppressed by cleaning and assembling in a clean bench(class 100)and clean room(class 10,000).
- * In case of selecting pressure gauge, choose the pressure range which can be used in between 30~65% of full scale, so that the gauge can give its full capacity.
- * Also should be confirmed whether the wetted parts material is suitable for the fluid or not.

TABLE OF GRADE FOR FORMATION

The grade formation of pressure gauges are classified according to the contents of manufacture and inspection methods, and its standard is as follows.

Grade	A	B
Assembly·Adjustment	In clean room (Class 10,000)	General manufacturing line
Leakage inspection	Pressurized by N ₂ Gas	N ₂ gas pressurization
Treatment	Use no oil & water	Use no oil & water
Packaging	After N ₂ gas flushing, this pressure gauge is packaged in a clean polyethylene bag.	Polyethylene bag

SPECIFICATION

Fluid:

Liquid

* Because an of an element being made of fluorine resin, pay careful attention to permeability.

Size:

50 DIA.

Construction material:

Sealing up construction·vinyl chloride

Mounting:

Stem·····  Type A

* Flange type is available, contact NKS for details.

Connection:

G3/8B(PF), R3/8(PT)

Wetted parts material:

Wetted parts Fluorine resin (PTFE)
Packing Fluorine resin (PTFE)

Pressure range:

0 ~ 0.1 → 0 ~ 1MPa ~ 0~1 → 0~10kgf/cm²
-0.1 ~ 0MPa (76cmHg ~ 0kgf/cm²)

Operating temperature:

10 ~ 30℃

Accuracy:

±1.5%F.S. or ±2%F.S.
(Depending on range)

Window:

Vinyl chloride

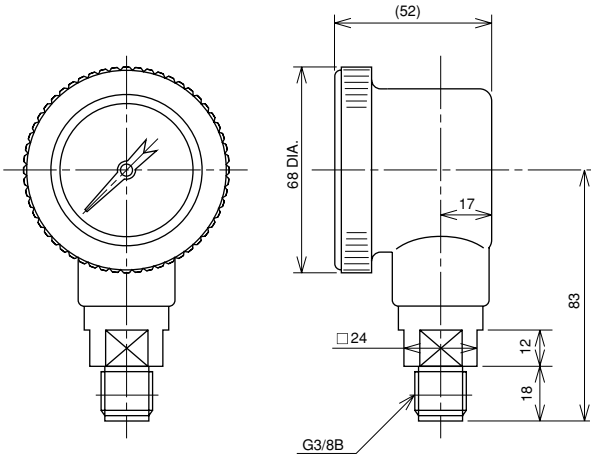
Use no oil & water:

Produce it not to remain oil or water in wetted parts.

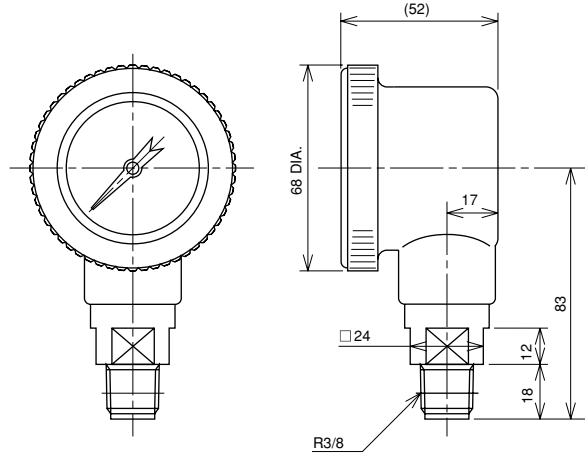
Weight:

Approx. 0.2kg

DIMENSIONS



SL81-133



SL81-183

Type No. constitution

Please specify Type No., each specification and range, when ordering.

Note: For this Model, there is no applicable item for the figures X, but please specify X when ordering.

