



Receiver Gauges

OUTLINE

This is a receiver gauge for the application of air pressure transmitting type pressure gauges, thermometers, flow meters, volume meters, and other various types of pneumatic control meters.

The pressure element of this gauge is specially manufactured for a receiver gauges by increasing a torque and, additionally, decreasing hysteresis, demonstrating a high receiving characteristic.

The scale angle is 270 for an actual pressure of 20 kPa to 100 kPa, making reading easier.

FEATURES

- The exterior dimensions and attaching method of this gauge is the same as that of JIS pressure gauges, making attaching work easier.
- Appropriate graduations in accordance with application can be selected.

SPECIFICATION

Fluid:

Gas

Size:

100 DIA., 150 DIA., □110

Mounting:

Stem.....



Type B (mounting hole)

Panel.....



Type D (mounting clamp, mounting hole)
Type Do (mounting clamp...U-type)

Connection:

G3/8B(PF), Rc1/4(PT female)

* For other connections, please contact us.

Gas contact part:

Bourdon tube Phospher bronze (C5191T)

Socket YBsC3

Pressure range (input):

20 ~ 100kPa (0.2 ~ 1kgf/cm²)

Operating temperature:

-5 ~ 40°C

Accuracy:

±0.75%F.S.

Scale angle:

270°

Standard dial:

Pressure·vacuum·compound range,
0 ~ 10, 0 ~ 100% (Unify scale, root scale)

Window:

Inorganic glass

Case material finishing:

Aluminium alloy die casting (ADC12), Aluminium alloy casting (AC7A), Zinc alloy die casting (ZDC2)
(Depending on model)Black

Blowout disk:

When an emergency, Bourdon tube exploded, it open up internal pressure from blowout disk, and blowout disk prevents puncture of Window.

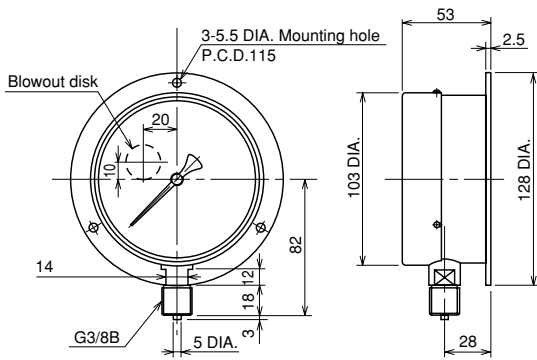
Note To keep normal function, please take a space behind of gauge at least 10mm when installing. Don't process or stop up the blowout disk.

Weight:

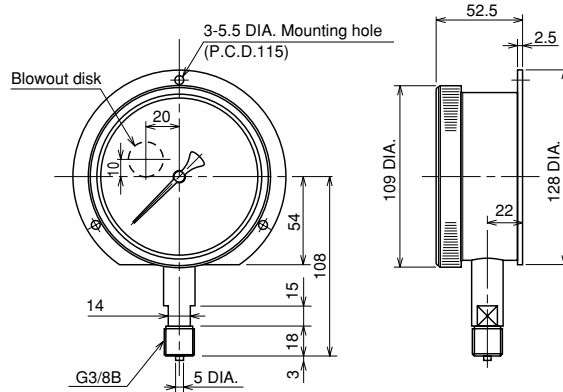
Approx. 0.6kg ~ Approx. 1.6kg

DIMENSIONS 1

100 DIA. Stem

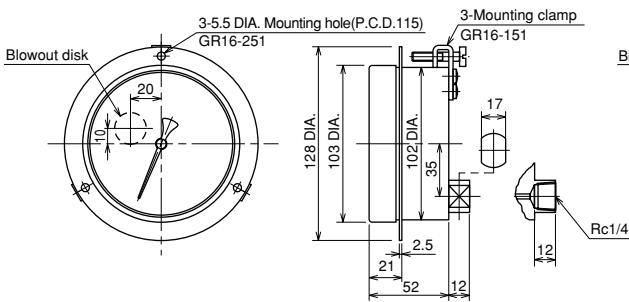


GR11-231

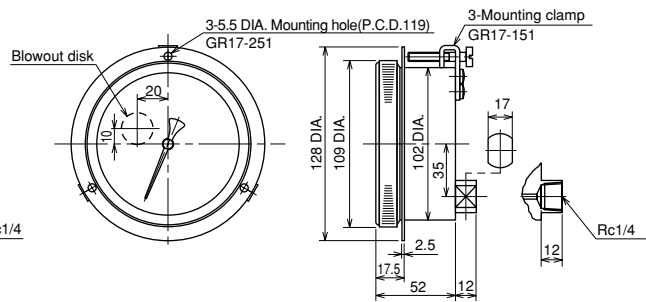


GR12-231

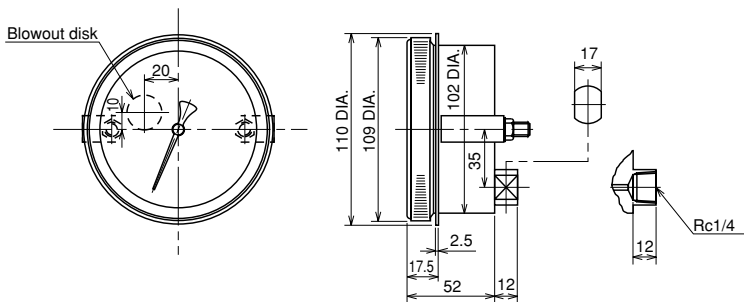
100 DIA. Panel



GR16-□51



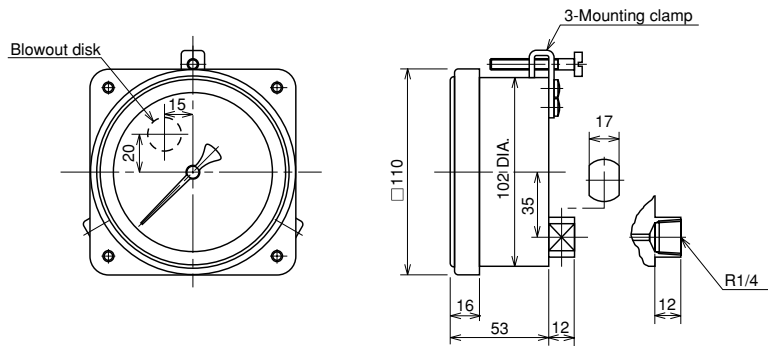
GR17-□51



GR18-151

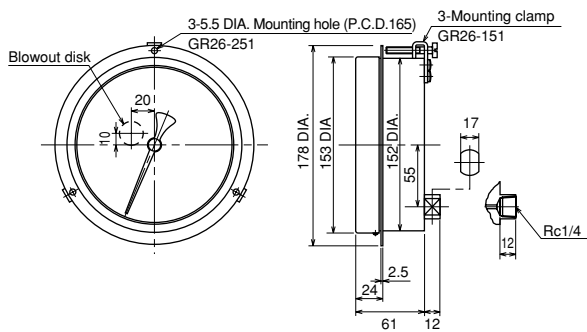
DIMENSIONS 2

□110 Panel

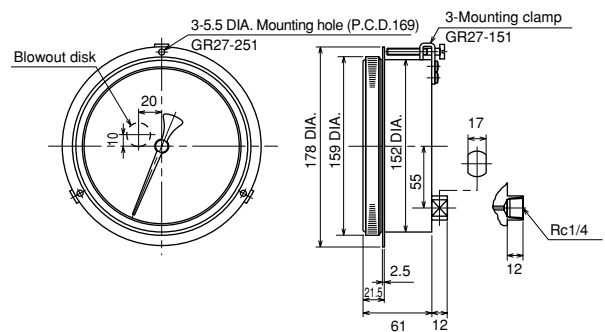


GR19-151

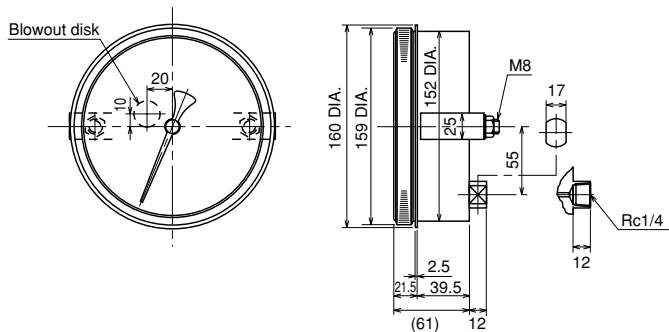
150 DIA. Panel



GR26-□51



GR27-□51



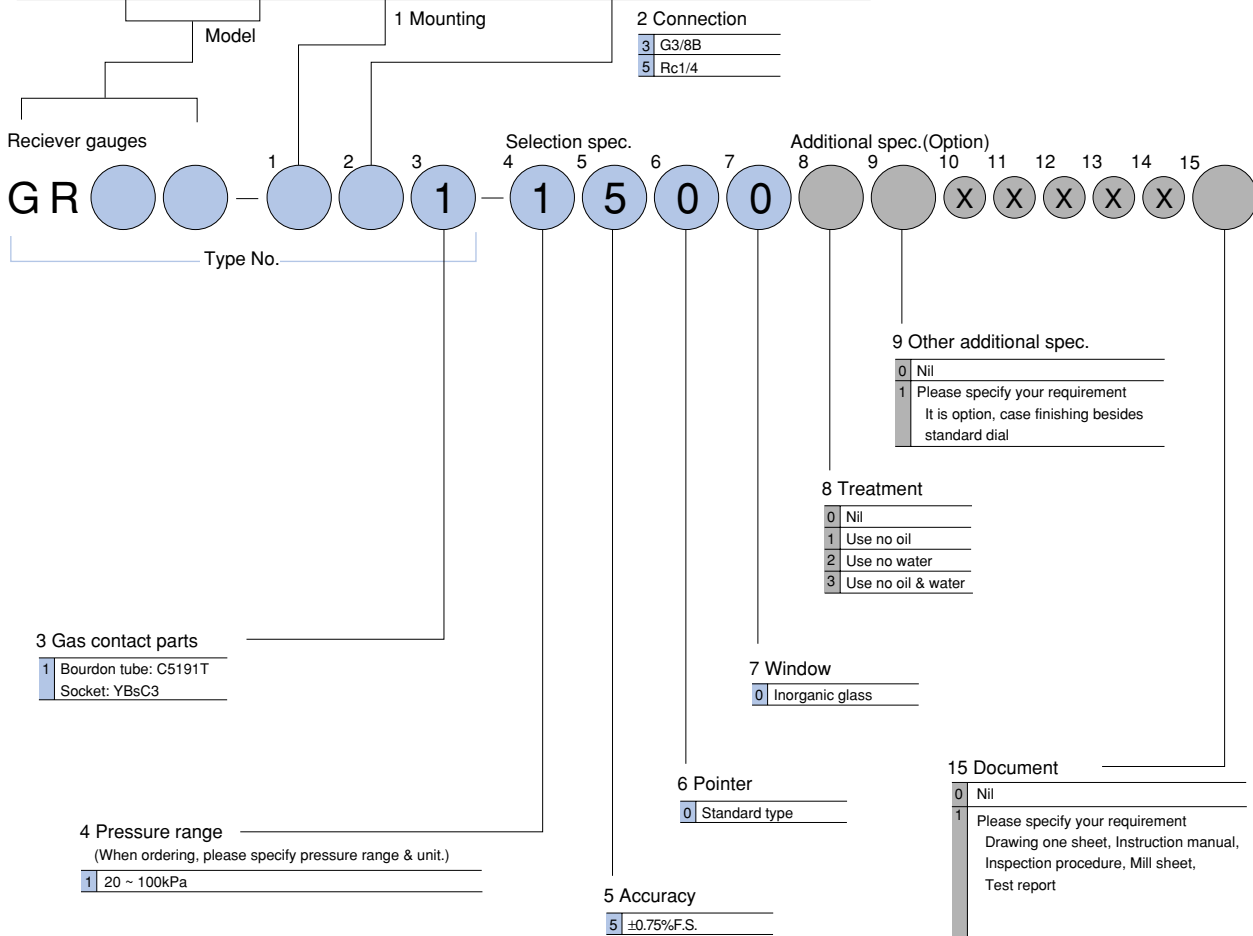
GR28-151

Type No. constitution

Please specify Type No., each specification and range, when ordering.

Note: For this Model, there is no applicable item for the figures X, but please specify X when ordering.

Size	Type	Case material	Weight
100 DIA.	General type 2 Type B (mounting hole) 3	G3/8B	AC7A 0.6kg
	Seal type 2 Type B (mounting hole) 3	G3/8B	ADC12 0.8kg
	General type 1 Type D (mounting clamp) 3	G3/8B	AC7A 0.6kg
	2 Type D (mounting hole) 5	Rc1/4	
	Seal type 1 Type D (mounting clamp) 3	G3/8B	ADC12 0.8kg
2 Type D (mounting hole) 5	Rc1/4		
	Seal type 1 Type Do (mounting clamp) 5	Rc1/4	ADC12 0.9kg
150 DIA.	General type 1 Type D (mounting clamp) 3	G3/8B	AC7A 0.9kg
	2 Type D (mounting hole) 5	Rc1/4	
	Seal type 1 Type D (mounting clamp) 3	G3/8B	AC7A 1.6kg
	2 Type D (mounting hole) 5	Rc1/4	AC7A 1.3kg
□110	Square type 1 Type D (mounting clamp) 5	Rc1/4	ZDC2 1.1kg



The contents in the catalogue are subject to change without notice.

NAGANO KEIKI CO., LTD.



UEDA FACTORY (JQA-0794)
MARUKO FACTORY (JQA-0789)

HEAD OFFICE & OVERSEAS : 1-30-4, HIGASHIMAGOME OHTA-KU, TOKYO, JAPAN.
TELEPHONE : 03 (3776) 5328
SALES DEPT FAX : 03 (3776) 5447
TELEX : 2468452 NKSTKY J

OVERSEAS PLANTS OR AFFILIATES: U.S.A., KOREA, GERMANY
OVERSEAS SALES NETWORK: AUSTRALIA, HONG KONG, INDONESIA, KOREA, MALAYSIA, PHILIPPINES, SINGAPORE, TAIWAN, THAILAND, U.S.A.

