



## GF3 Solid front Pressure Gauges

### OUTLINE

This is a high safety and excellently durable pressure gauge applied to the petrochemical industry, nuclear and various plants. Because of demonstrating excellent atmospheric resistance, this pressure gauge can be applied to processes as well as extensive applications.

### FEATURES

- By applying the solid front(front wall type)case, in case of gauge damage, pressure will be released from the safety window of the rear of the gauge.
  - By applying a durable pressure element, excellent durability is demonstrated even in the high range.
  - The bayonet construction of the case shuts off air and, additionally, the case is made of stainless steel. So, this pressure gauge demonstrates excellent atmosphere resistance.
  - This gauge has been designed in accordance with the ANSI Standard B40, 1M Gauges-Pressure Indicating Dial Type-Elastic Element.
- \* In case of selecting pressure gauge, choose the pressure range which can be used in between 30~65% of full scale, so that the gauge can give its full capacity.
- \* Also should be confirmed whether the wetted parts material is suitable for the fluid or not.

### SPECIFICATION

#### Fluid:

Gas or liquid

#### Size:

100 DIA.

#### Mounting:

Stem.....



Type A

Panel.....



Type D(mounting hole)

#### Connection:

G3/8B(PF), G1/2B(PF), 1/2NPT,  
R3/8(PT), R1/2(PT)

\* For other connections, please contact us.

#### Wetted parts material:

Bourdon tube · socket 316 st.st.

#### Pressure range:

0 ~ 0.1 → 0 ~ 200MPa (0 ~ 1 → 0 ~ 2000kgf/cm<sup>2</sup>)

-0.1 ~ 0 → -0.1 ~ 2MPa

(76cmHg ~ 0kgf/cm<sup>2</sup> → 76cmHg ~ 20kgf/cm<sup>2</sup>)

#### Operating temperature:

-5 ~ 40°C

#### Accuracy:

±1.0%F.S.

#### Window:

Organic glass

#### Case material:

304st.st. (electro polishing)

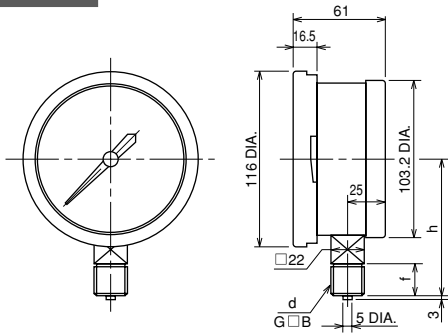
#### Treatment: (Option)

Use no oil & water ... Produce it not to remain oil or water in wetted parts.

#### Weight:

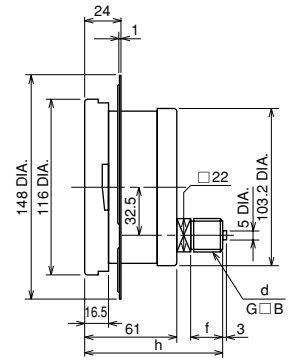
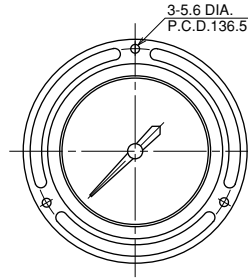
Approx. 0.7kg

## DIMENSIONS



d	h	f
G3/8B	86	18
G1/2B	88	20
1/2NPT	88	20
R3/8	86	18
R1/2	88	20

GF32-1 □ □



d	h	f
G3/8B	90	18
G1/2B	92	20
1/2NPT	88	20
R3/8	90	18
R1/2	92	20

GF37-2 □ □

## Type No. constitution

Please specify Type No., each specification and range, when ordering.

Note: For this Model, there is no applicable item for the figures X, but please specify X when ordering.

Model: G F 3 2 — 1 Stem Type A  
G F 3 7 — 2 Panel Type D (Mounting hole)

1. Mounting (type)

Solid front pressure gauges

Type No. GF 3 1 2 3 4 5 6 7 8 9 10 11 12 13 14 15

2 Connection

3	G3/8B
4	G1/2B
6	1/2NPT
8	R3/8
9	R1/2

3 Wetted parts material

3	Bourdon tube: 316st.st.
	Socket: 316st.st.

4 Pressure range (MPa)  
(When ordering, please specify pressure range & unit.)

1	-0.1 ~ 0, 0.1, 0.2, 0.3, 0.4, 0.6
2	0 ~ 0.1, 0.2, 0.3, 0.4, 0.6
3	0 ~ 1, 1.5, 2, 2.5, 3.5
4	0 ~ 5, 7, 10
5	0 ~ 15, 25, 35
6	0 ~ 50, 70
7	0 ~ 100
8	0 ~ 150, 200

5 Accuracy

6	±1.0%F.S.
---	-----------

6 Pointer

0	Standard type (Zero adjustable)
---	---------------------------------

7 Window

0	Organic glass
---	---------------

8 Treatment

0	Nil
1	Use no oil
2	Use no water
3	Use no oil & water

15 Document

0	Nil
1	Please specify your requirement Drawing one sheet, Instruction manual, Inspection procedure, Mill sheet, Test report

The contents in the catalogue are subject to change without notice.

**NAGANO KEIKI CO., LTD.**



UEDA FACTORY (JQA-0794)  
MARUKO FACTORY (JQA-0789)

HEAD OFFICE & OVERSEAS : 1-30-4, HIGASHIMAGOME OHTA-KU, TOKYO, JAPAN.  
TELEPHONE : 03 (3776) 5328  
SALES DEPT FAX : 03 (3776) 5447  
TELEX : 2468452 NKSTKY J

OVERSEAS PLANTS OR AFFILIATES: U.S.A., KOREA, GERMANY  
OVERSEAS SALES NETWORK: AUSTRALIA, HONG KONG, INDONESIA, KOREA, MALAYSIA, PHILIPPINES, SINGAPORE, TAIWAN, THAILAND, U.S.A.