

XR66 COMPACT PRESSURE REGULATOR



OUTLINE

This is the compact sized model of XR series which has high reputation and reliability for semiconductor production equipment.

FEATURE

- Available for integrated system thanks to compactness.
- Realizing a large flow rate of 10 L/min.*1
- About 1.5 ml of capacity, one third of that of the conventional type.
- The contact gas part is finished with ultra clean (UC) treatment..

*1 Our company standard. (Refer to the flow rate characteristic for detail.)

SPEXIFICATION

Fluid:
Various kinds of process gases

Operating condition:
Under the normal condition, where there is no inflammable gas or liquid which cause the ignition or explosion

Max.flow:
10L/min. (normal)

Input (Primary):
1MPa

Output (Secondary):
0.05 ~ 0.3MPa

Connection:
1/4" (UJR fitting, CVC fitting)

Gas contact parts:

Body & Valve	316L st.st.
Diaphragm	316L st.st.
Valve spring	316 st.st.
Valve seat	CTFE

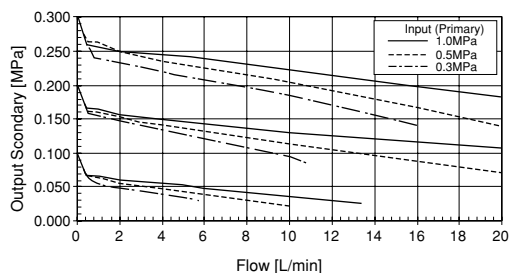
Surface treatment of gas contact parts:
Ultra-clean (UC) treatment
Based on the thorough quality control from the manufacturing to the shipment, we offer "the total clean system" especially our technology for surface treatment, welding and super cleaning is very much characterized and we are very much paying attention to such technology.

Leakage: (Helium test)
 $1.01 \times 10^{-11} \text{ Pa} \cdot \text{m}^3/\text{sor less}$

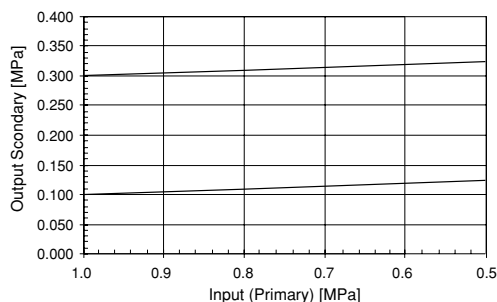
Particle:
Zero-count for 0.1 μm or greater guarn teed by in spection before shipment.

Weight:
Approx. 0.25kg

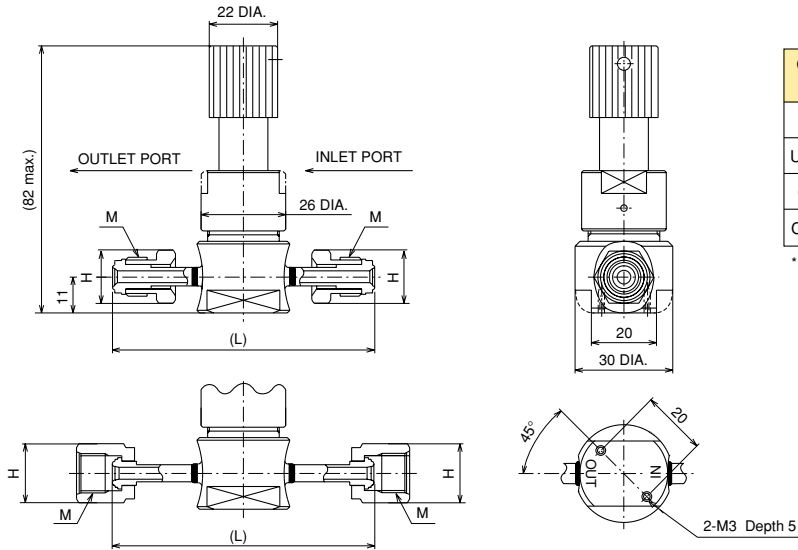
FLOW CHARACTERISTICS



PRESSURE CHARACTERISTICS



DIMENSIONS



Connection of fitting	Piping DIA.	Size M	Dimensions	
			H	(L)
UJR Male nut	1/4	9/16-18UNF	17 × 19.6 Hex.	83.8
UJR Female nut			19 × 21.9 Hex.	
CVC Male nut			15.8 × 18.2 Hex.	
CVC female nut			19 × 21. Hex.	

* Bearings are not included.

Model No. configuration For entering order, select model number, each spec and pressure range.

(Note: In this model, "X" marked figures do not have the sppliedspec, so when you order, just specify "X" marking for such part.)

Compact pressure regulator

2 Connection

N	1/4" UJR Male nut
Q	1/4" UJR Female nut
W	1/4" CVC Male nut
Y	1/4" CVC Female nut

Selection spec.

Additional spec. (Option)

6 Seat material

C	CTFE
---	------

5 Output (Secondary)

1	0.05 ~ 0.3MPa
---	---------------

4 Input (Primary)

1	1MPa
---	------

15 Document

0	Nil
1	Please specify your requirement Drawing one sheet, Instruction manual Inspection procedure, Mill sheet, Test report

1 Type No. X R 6 6 - 0 1 - 1 1 C X X X X X X X X X

3 Gas contact parts

1	Body & Valve Diaphragm: 316L st.st.
---	--

The contents in the catalogue are subject to change without notice.

NAGANO KEIKI CO., LTD.



UEDA FACTORY (JQA-0794)
MARUKO FACTORY (JQA-0789)

HEAD OFFICE & OVERSEAS : 1-30-4, HIGASHIMAGOME OHTA-KU, TOKYO, JAPAN.
TELEPHONE : 03 (3776) 5328
SALES DEPT FAX : 03 (3776) 5447
TELEX : 2468452 NKSTKY J

OVERSEAS PLANTS OR AFFILIATES: U.S.A., KOREA, GERMANY
OVERSEAS SALES NETWORK: AUSTRALIA, HONG KONG, INDONESIA, KOREA, MALAYSIA, PHILIPPINES, SINGAPORE, TAIWAN, THAILAND, U.S.A.