



Model KH21 Pressure Transmitter

OUTLINE

This is a pressure transmitter for the low pressure range of which pressure sensing portion is equipped with the combination of a stainless steel diaphragm and a semiconductor strain gauge. Excellent corrosion resistance is provided. This pressure transmitter can be applied to industrial process equipment.

FEATURES

- The construction is of drip-proof type. The front side of this pressure transmitter is a cover and this cover can be easily removed.
- Zero span adjustment can be easily performed.
- Unified signals for industrial gauges 4 mA DC to 20 mA DC is outputted. This pressure transmitter is of two-wire current transmitting type and a test terminal is equipped. So, a test without opening an output circuit can be performed.
- Pressures between a negative pressure to a positive pressure can be continuously measured.

SPECIFICATION

Fluid:

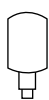
Gas or liquid

Operating condition:

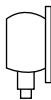
Under the normal condition, where there is no inflammable gas or liquid which cause the ignition or explosion.

Mounting :

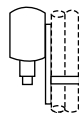
Stem mounting



Surface mounting



2B pipe mounting
(Direct mounting)



* With indicator or diaphragm seal type is also available.

Connection:

G3/8B (PF), G1/2B (PF), Rc 1/4 (PT female)
Rc 3/8 (PT female), Rc 1/2 (PT female), R1/4 (PT),
R3/8 (PT), R1/2 (PT), 1/4NPT, 1/2NPT

Wetted parts material:

Diaphragm 316 st.st.
Socket SCS14 or 316 st.st.

Pressure range:

0 ~ 2kPa → 0 ~ 0.3MPa (0 ~ 200mmH₂O → 0 ~ 3.0kgf/cm²)
-2 ~ +2kPa → -0.1 ~ +0.3MPa
(-200 ~ +200mmH₂O → -1 ~ +3.0kgf/cm²)

Power source:

24V DC ±10%

Output:

4 ~ 20mA DC

Load resistance:

500Ω max.

Transmission system:

2 wire system

Max. allowable pressure:

150% of rated pressure

Operating temperature:

-20 ~ 60°C (But fluid should not be frozen)

Storage temperature:

-30 ~ 70°C

Accuracy:

±0.5%F.S.

Temperature coefficient:

±0.05%F.S./°C (Zero)

±0.05%F.S./°C (Span)

Outlet for electric wire:

Gland JIS 20b

Case material • finishing:

Aluminium alloy die casting (ADC12) • Gray

Construction:

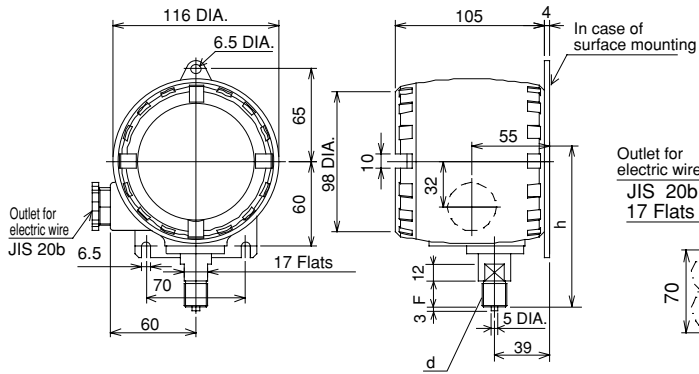
Splash-proof (IP54)

Weight:

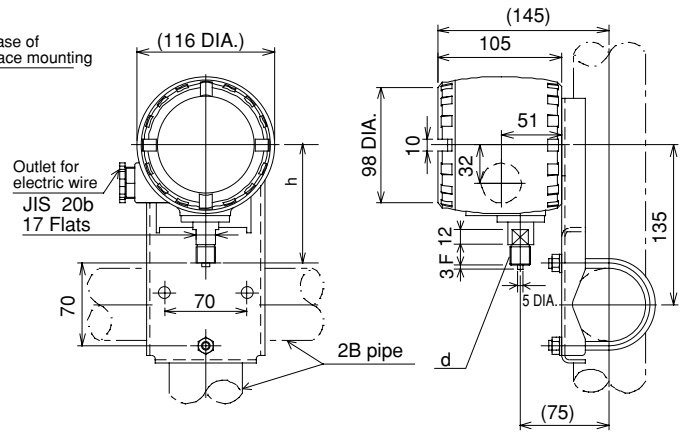
Approx.1.5 kg (Stem mounting)

DIMENSIONS

Stem mounting • Surface mounting

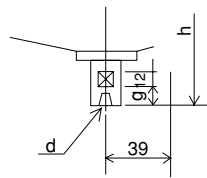


2B pipe mounting



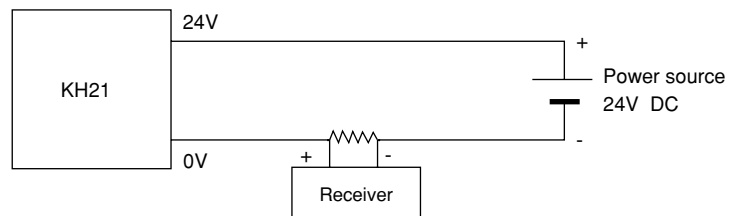
d	F	h
G ³ / ₈ B	18	102
G ¹ / ₂ B	20	104

[In case of female thread]



d	g	h
Rc ¹ / ₄	16	100
Rc ¹ / ₂	21	105

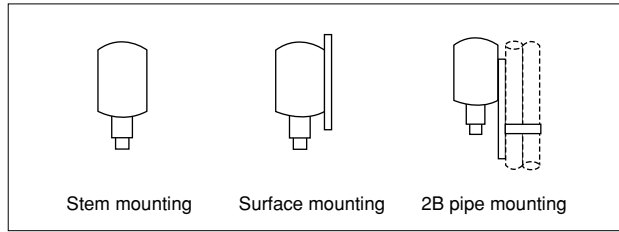
WIRING



Type No. constitution

Please specify Type No.,each specification and range when ordering.

Note: For this Model,there is no applicable item for the figures X ,but please specify X when ordering.



Stem mounting Surface mounting 2B pipe mounting

