



# GC63 Digital Differential Pressure Gauge

## OUTLINE

This is a battery type digital micro-differential pressure gauge, which is appropriate for equipment and apparatus in the field of air conditioning and semiconductor industries for the purposes of watch at the site. A small and high performance capacitance sensor is adapted to the sensing portion, sensing micro-differential pressure from 50 Pa with high sensitivity. No wiring is required, making it easier to install at the measuring point.

## FEATURES

- Because of the adoption of a small and high performance silicon capacitance sensor, this pressure sensor demonstrates excellent vibration resistance and impact resistance.
- This pressure sensor is equipped with a large LCD, 3 1/2 digits digital display and analogue bar graph indication, making it appropriate for at-the-site indication.
- Because of the battery type, no exterior power source and wiring are required.
- A comparator output is installed inside. So, this pressure sensor can be applied for the detection of filter clogging.

## SPECIFICATION

### Fluid:

Dry air or non corrosive gas

### Operating condition:

Under the normal condition, where there is no inflammable gas or liquid which cause the ignition or explosion.

### Mounting:

Surface mounting

### Connection:

G1/8 (Bottom, back)

### Gas contact parts:

Silicon, ABS

### Differential pressure range:

0 ~ 50Pa → 0 ~ 5kPa  
±50Pa → ±500Pa

### Max. allowable pressure:

50kPa

### Accuracy:

Display accuracy ±2.0%F.S. ±1digit or less  
±1.0%F.S. ±1digit or less  
(Depending on differential pressure range)

Temperature coefficient ±0.2%F.S./°C or ±0.1%F.S./°C  
(Zero • Span)  
(Depending on differential pressure range)

### Display:

Display type 3 1/2 digit LCD digital display  
(Height of letter 17mm)  
LCD analog bar graph  
(21 segment)

Display period 1s

### Display unit:

Pa (kPa) ↔ mmH<sub>2</sub>O Unit cut-over

### Battery:

Alkaline Dry cell (LR6) × 2

### Battery life span:

Continuous operation Approx. 2 years

## SPECIFICATION 2

Cable for power source • signaling: (Option) In load  
 External power source 12 ~ 24V DC 5mA max.  
 Comparator output N channel opening drain  
 (30V DC 80mA max.)  
 Response: Within 2s  
 Operating mode: Window comparator  
 Dead band: 1%F.S. fixed  
 Operating display: H, L display

Filter function:  
 1s, 2s, 4s (Moving average)A@

Error message function:  
 Over pressure, Error message for adjustment

Hold function:  
 Peak value, Bottom value

Other function:  
 With one touch of zero adjustment, Keyboard lock-out

Alarm display:  
 Galvanic cell power down alarm display

Operating temperature:  
 0 ~ 40°C

Operating humidity range:  
 35 ~ 85%RH (Prohibited dew condensation)

Storage temperature range:  
 -10 ~ 50

Case material:  
 ABS

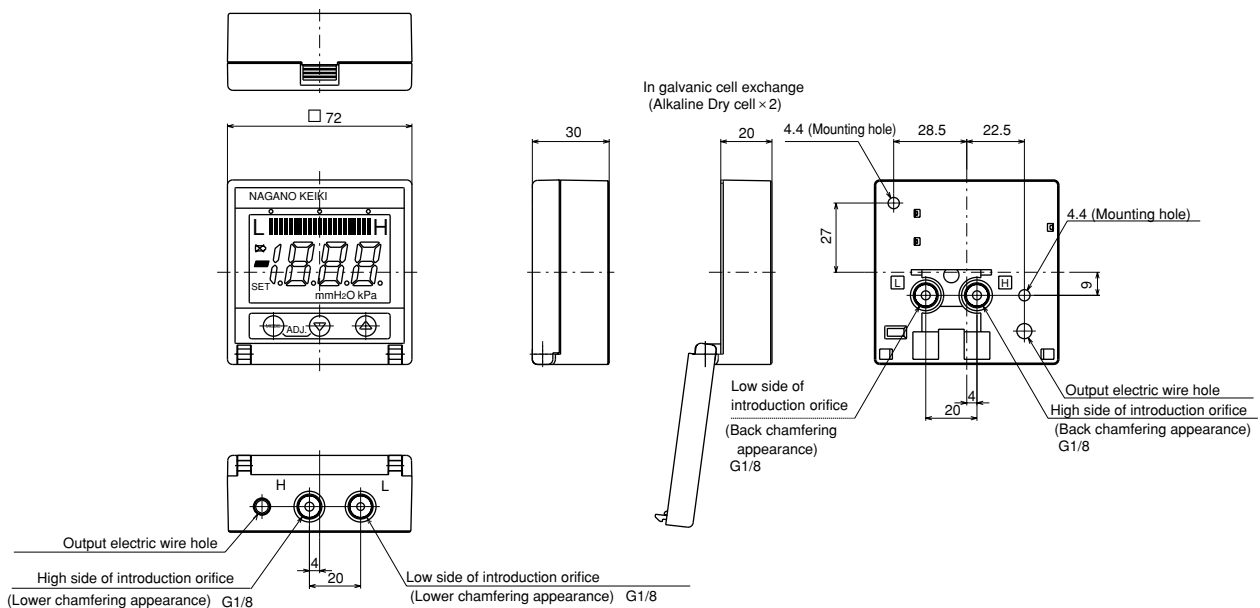
Construction:  
 IP40 (Indoor use)

Weight:  
 Approx. 130g (Include battery)

Differential pressure range, Display figures, Accuracy and temperature coefficient:

Differential pressure range		LCD Display digit		Display accuracy	Temperature coefficient
		Pa(kPa)	mmH <sub>2</sub> O		
0 ~ 50Pa	±50Pa	50.0	5.10	±2.0%F.S. ±1digit or less	±0.2%F.S./°C (Zero/Span)
0 ~ 100Pa	±100Pa	100	10.2		
0 ~ 500Pa	±500Pa	500	51.0		
0 ~ 1kPa	_____	1.00	102	±1.0%F.S. ±1digit or less	±0.1%F.S./°C (Zero/Span)
0 ~ 5kPa	_____	5.00	510		

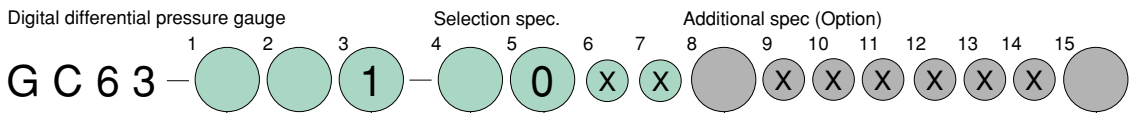
## DIMENSIONS



# Type No. constitution

Please specify Type No., each specification and range, when ordering.

Note: For this Model, there is no applicable item for the figures X, but please specify X when ordering.



Type No.

### 1 Mounting

- 1 Surface mounting
- 2 With clump for surface mounting
- 3 With L type clump

### 2 Pressure connection

- 1 G1/8 (Standard)
- 2 5 DIA. Barb (straight)
- 3 7 DIA. Barb (straight)
- 4 7 DIA. Barb (Round)
- 5 Joint for 6mm DIA. metal pipe
- 6 Rc1/8 Convert joint

\* About 2 ~ 4 required, it is attached polyvinyl chloride tube 2 m.

### 3 Display

- 1 Differential pressure display

### 4 Differential pressure range

- 0 ~ 50 Pa
- 1 0 ~ 100Pa
- 0 ~ 500Pa
- 2 0 ~ 1kPa
- 0 ~ 5kPa
- ± 50 Pa
- 3 ± 100Pa
- ± 200 Pa

### Selection spec.

### Additional spec (Option)

### 15 Document

- 0 Nil
- 1 Please specify your requirement  
Drawing one sheet, Instruction manual,  
Inspection procedure, Mill sheet,  
Test report

### 8 Cable for power source • signaling

- 0 Nil (display only)
- C Cable for power source • signaling

\* The length of cable is normal with 2 m.

### 5 Display accuracy

- 0 ±2.0% F.S. ±1digit ( ± 500Pa or less)
- ±1.0% F.S. ±1digit (1kPa or over)